



10 μm
┌───┐

Mag = 1.30 K X

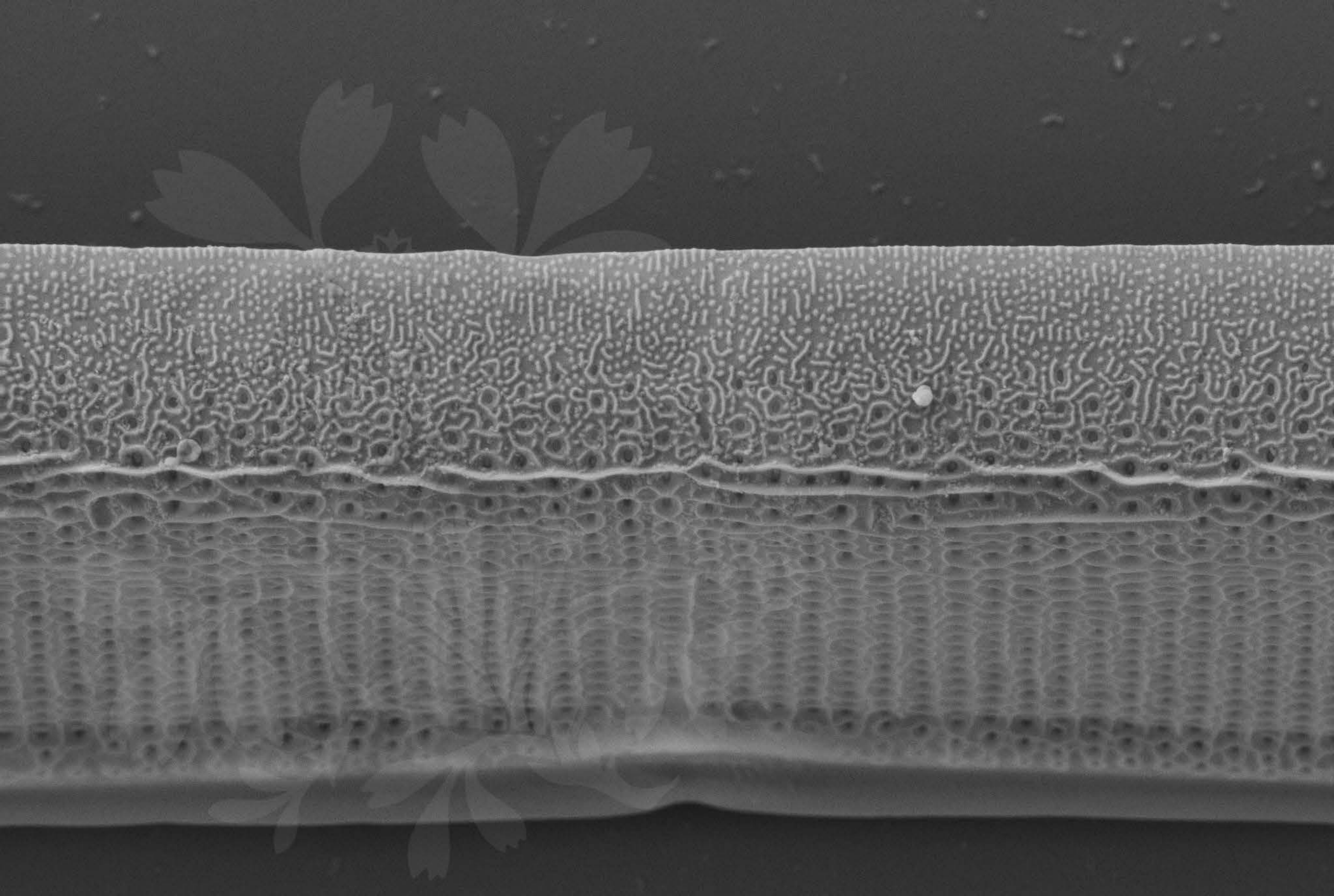
EHT = 4.50 kV

Signal A = SE2 Date :20 Feb 2017

WD = 4.3 mm

File Name = BC0897_0104.tif





1 μm
|-----|

Mag = 20.00 K X

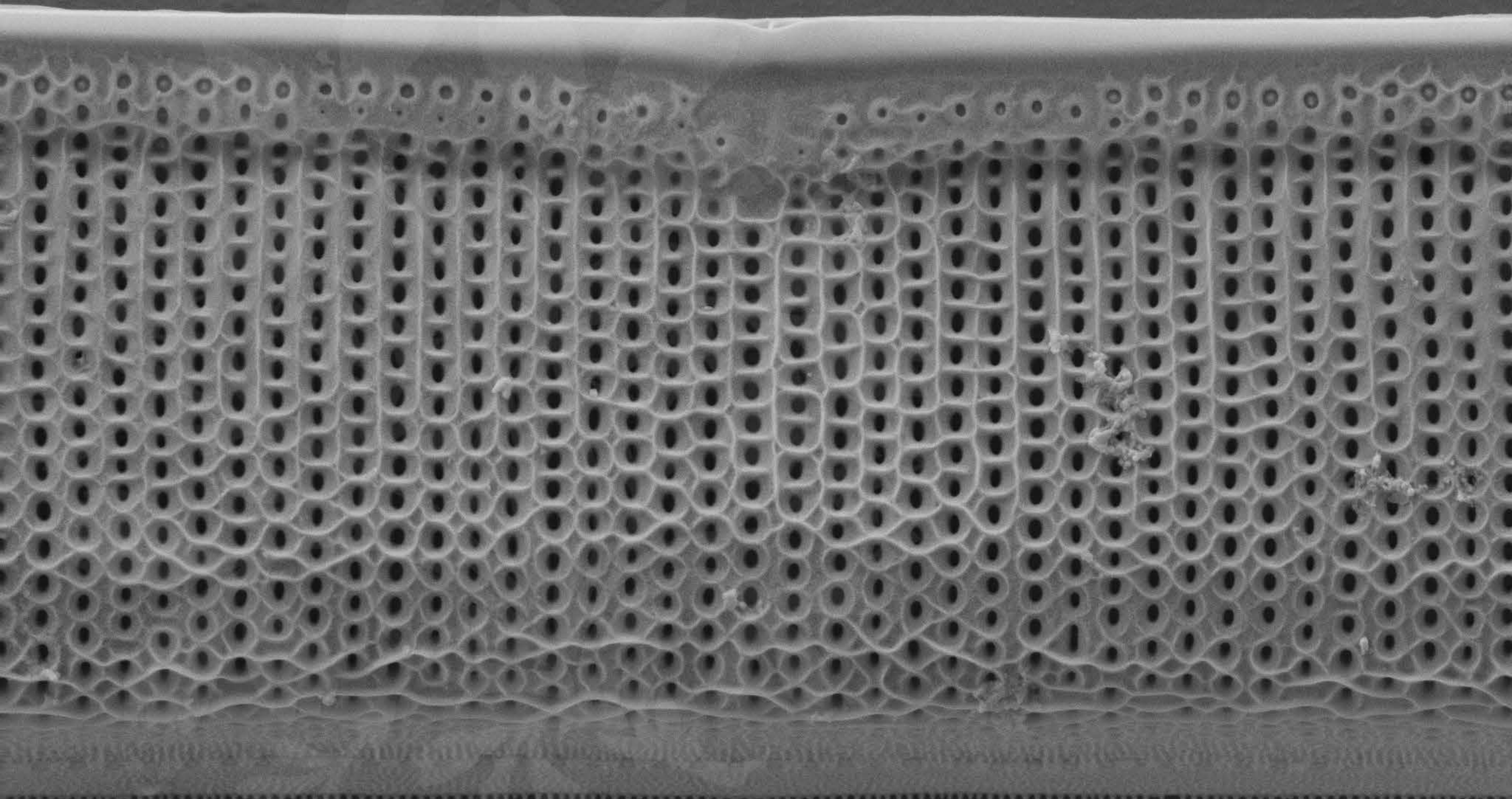
EHT = 4.50 kV

Signal A = SE2 Date :20 Feb 2017

WD = 4.3 mm

File Name = BC0897_0205.tif





1 μm
|-----|

Mag = 20.00 K X

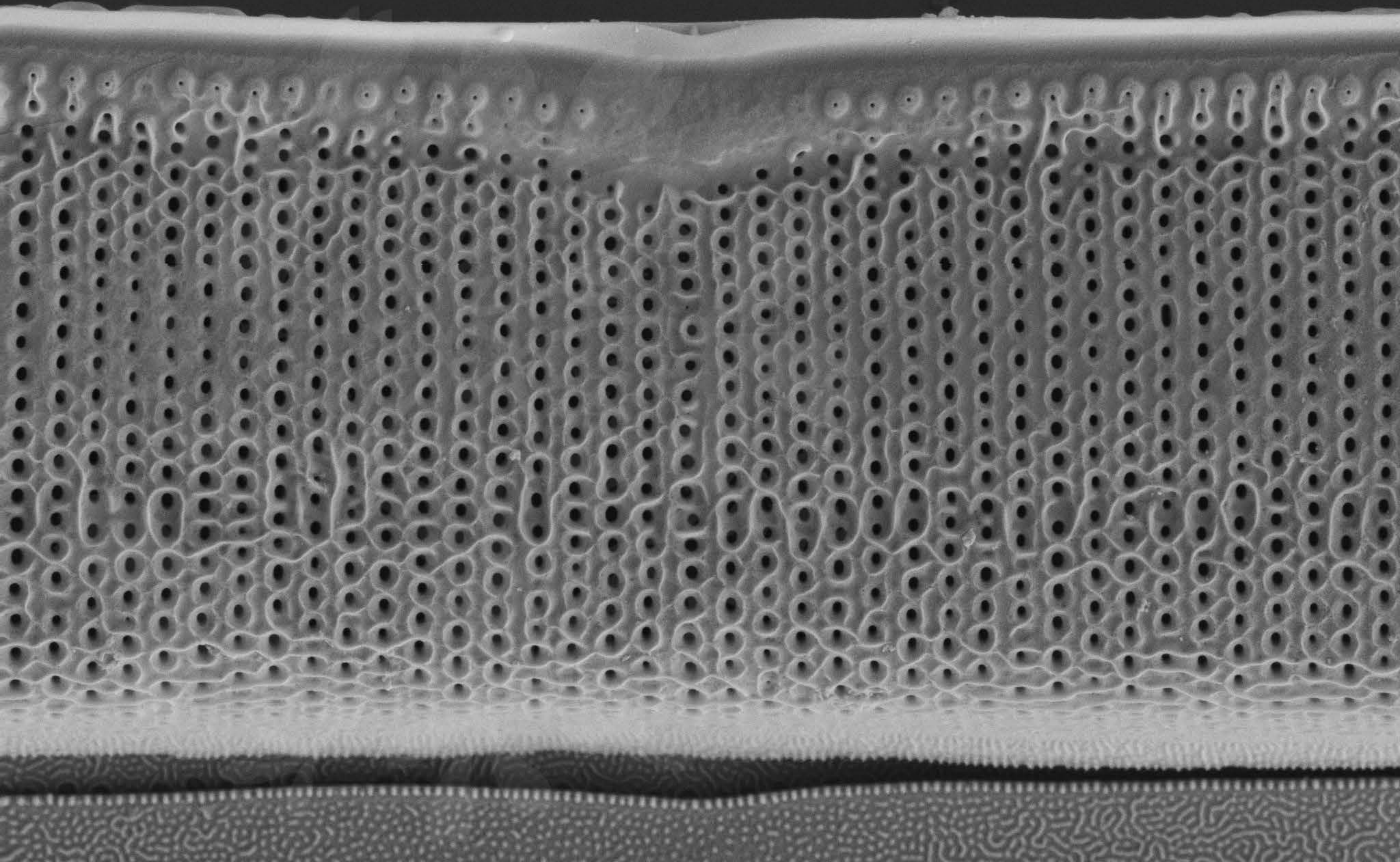
EHT = 4.50 kV

Signal A = SE2 Date :20 Feb 2017

WD = 4.3 mm

File Name = BC0897_0306.tif





1 μm
|-----|

Mag = 20.00 K X

EHT = 4.50 kV

Signal A = SE2 Date :20 Feb 2017

WD = 4.3 mm

File Name = BC0897_0407.tif





1 μ m
|-----|

Mag = 20.00 K X

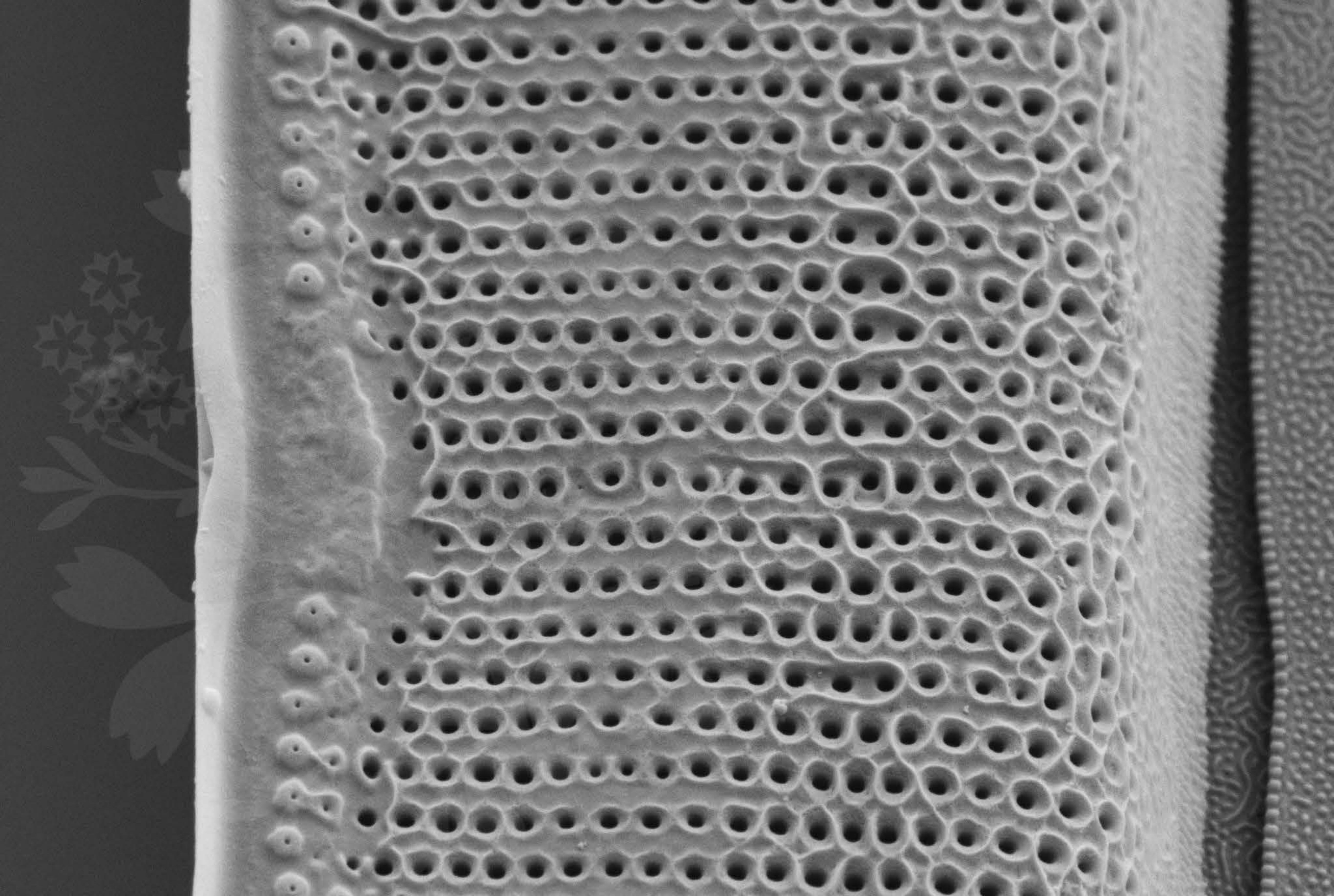
EHT = 4.50 kV

Signal A = SE2 Date :20 Feb 2017

WD = 4.3 mm

File Name = BC0897_0508.tif





200 nm



Mag = 30.00 K X

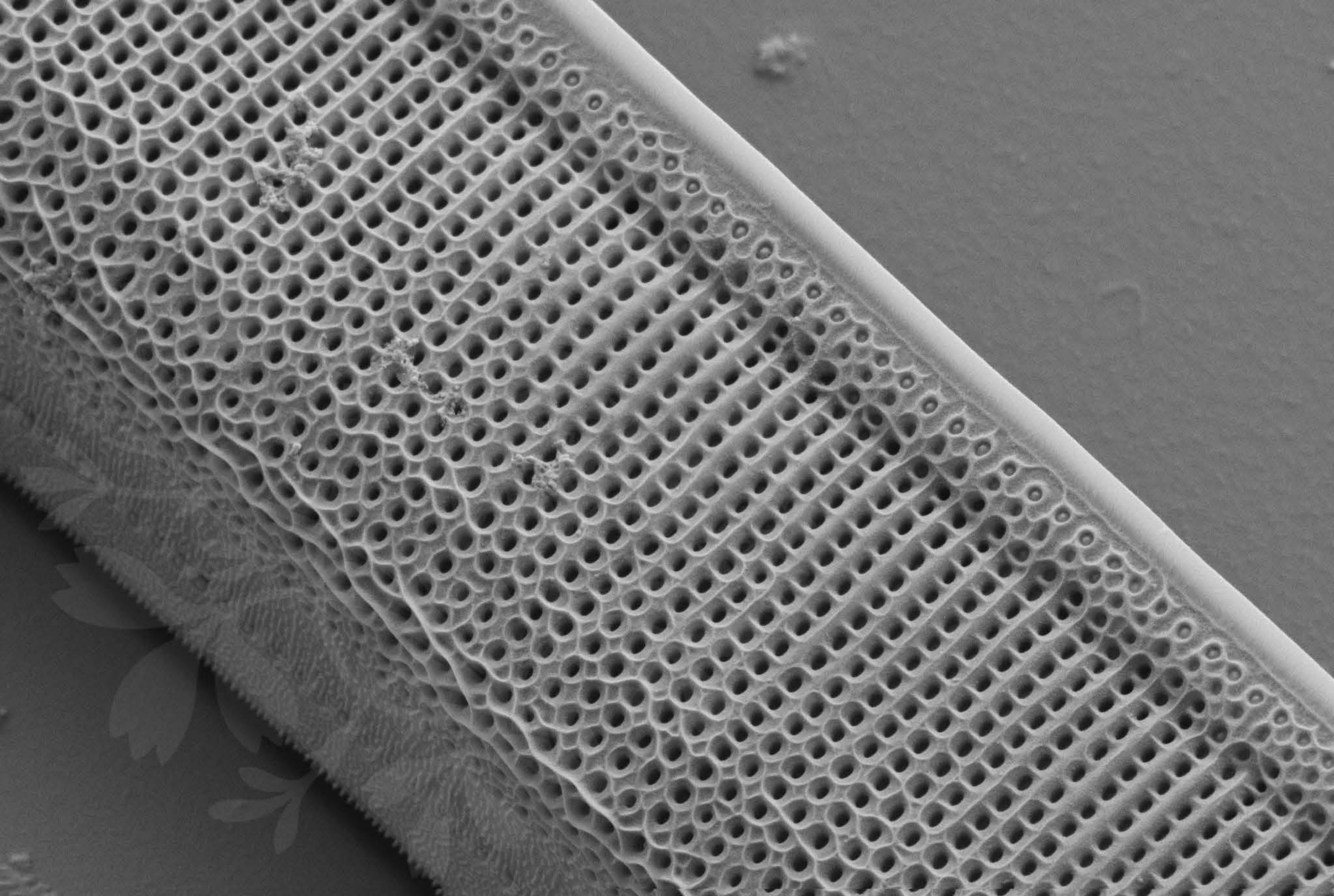
EHT = 4.50 kV

Signal A = SE2 Date :20 Feb 2017

WD = 4.3 mm

File Name = BC0897_0609.tif





1 μm



Mag = 20.00 K X

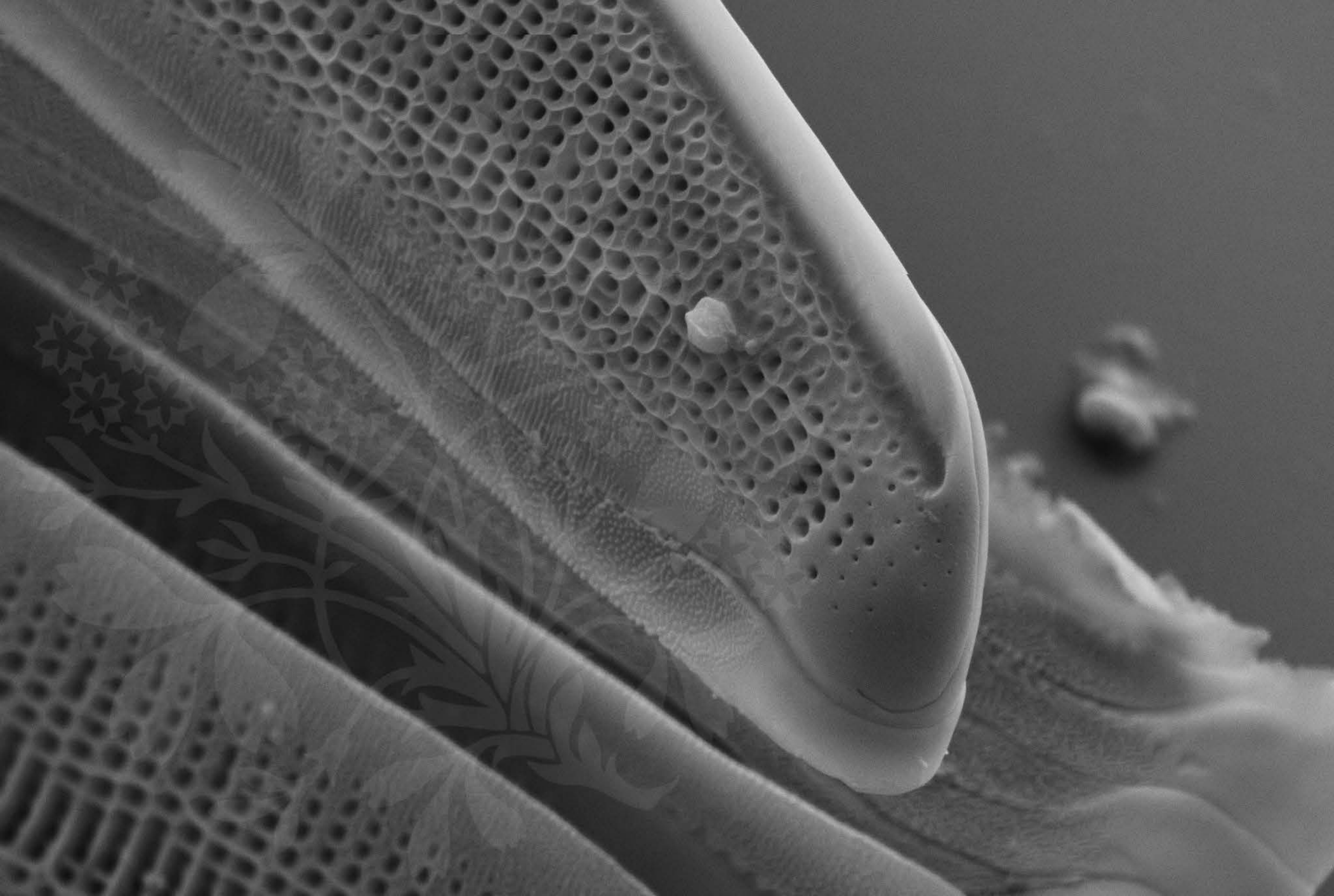
EHT = 4.50 kV

Signal A = SE2 Date :20 Feb 2017

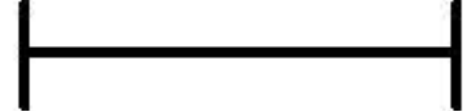
WD = 4.3 mm

File Name = BC0897_0710.tif





1 μm



Mag = 20.00 K X

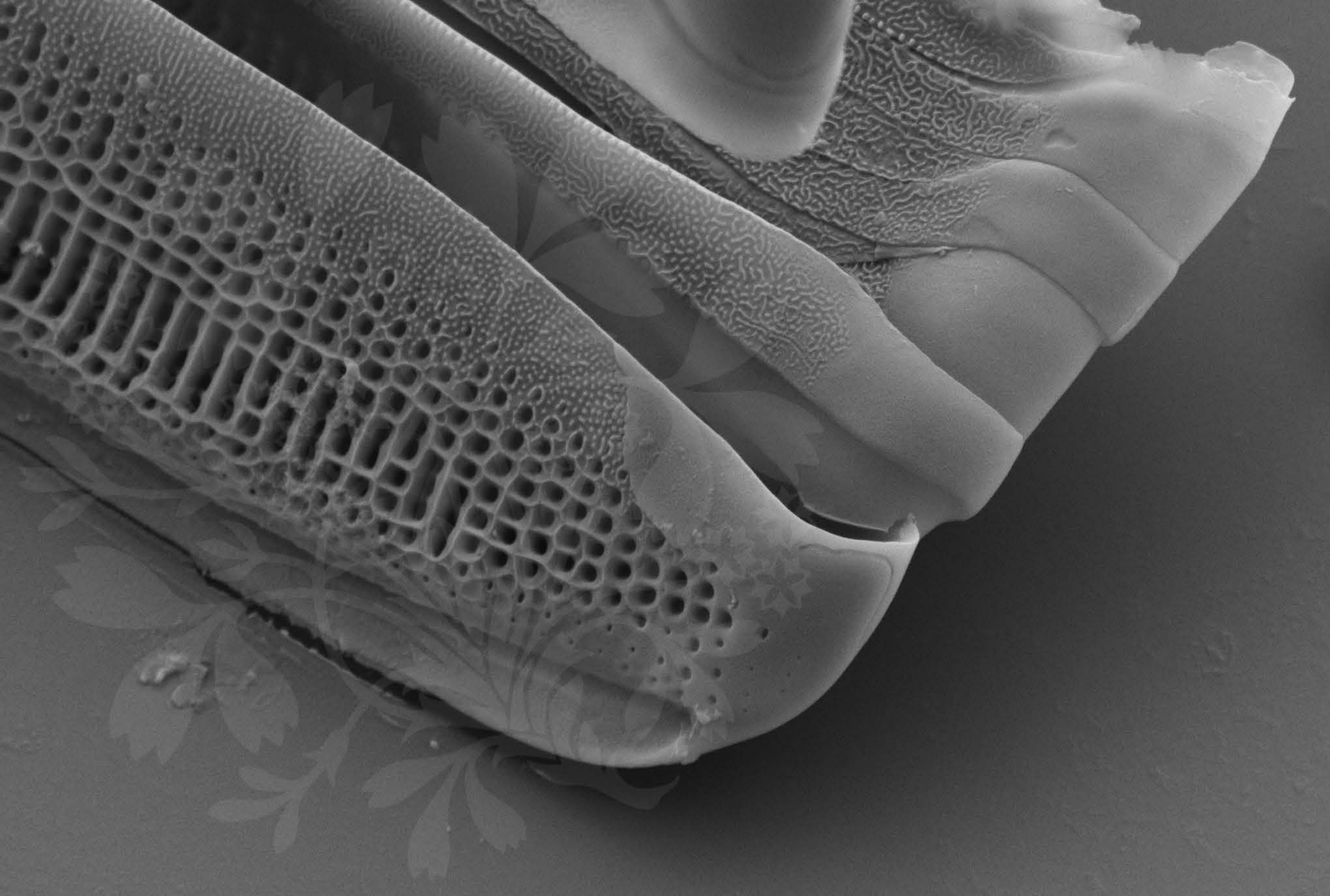
EHT = 4.50 kV

Signal A = SE2 Date :20 Feb 2017

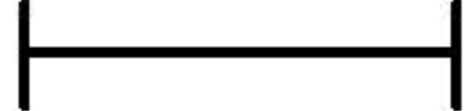
WD = 4.3 mm

File Name = BC0897_0811.tif





1 μm



Mag = 20.00 K X

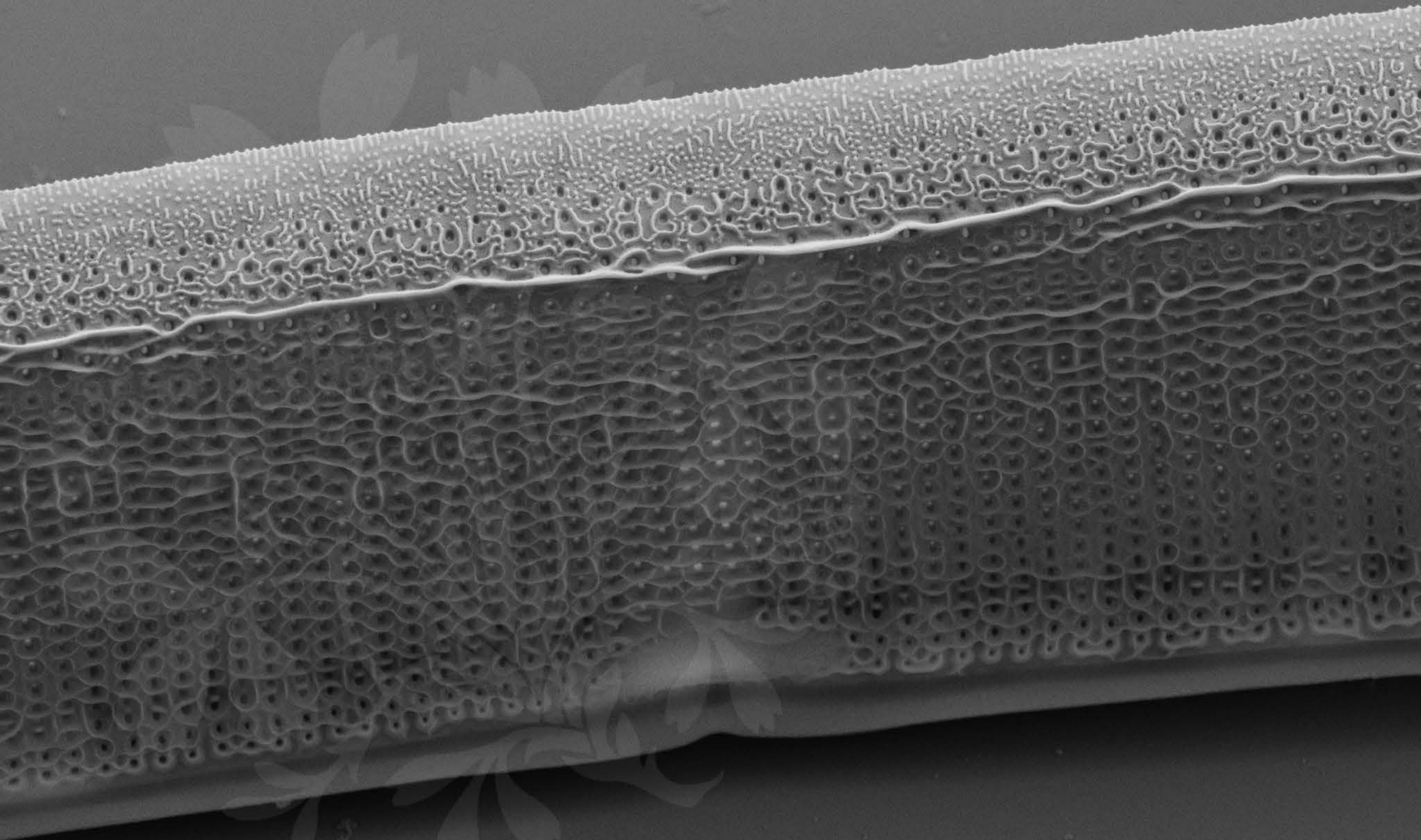
EHT = 4.50 kV

Signal A = SE2 Date :20 Feb 2017

WD = 4.3 mm

File Name = BC0897_0912.tif





1 μm

Mag = 16.00 K X

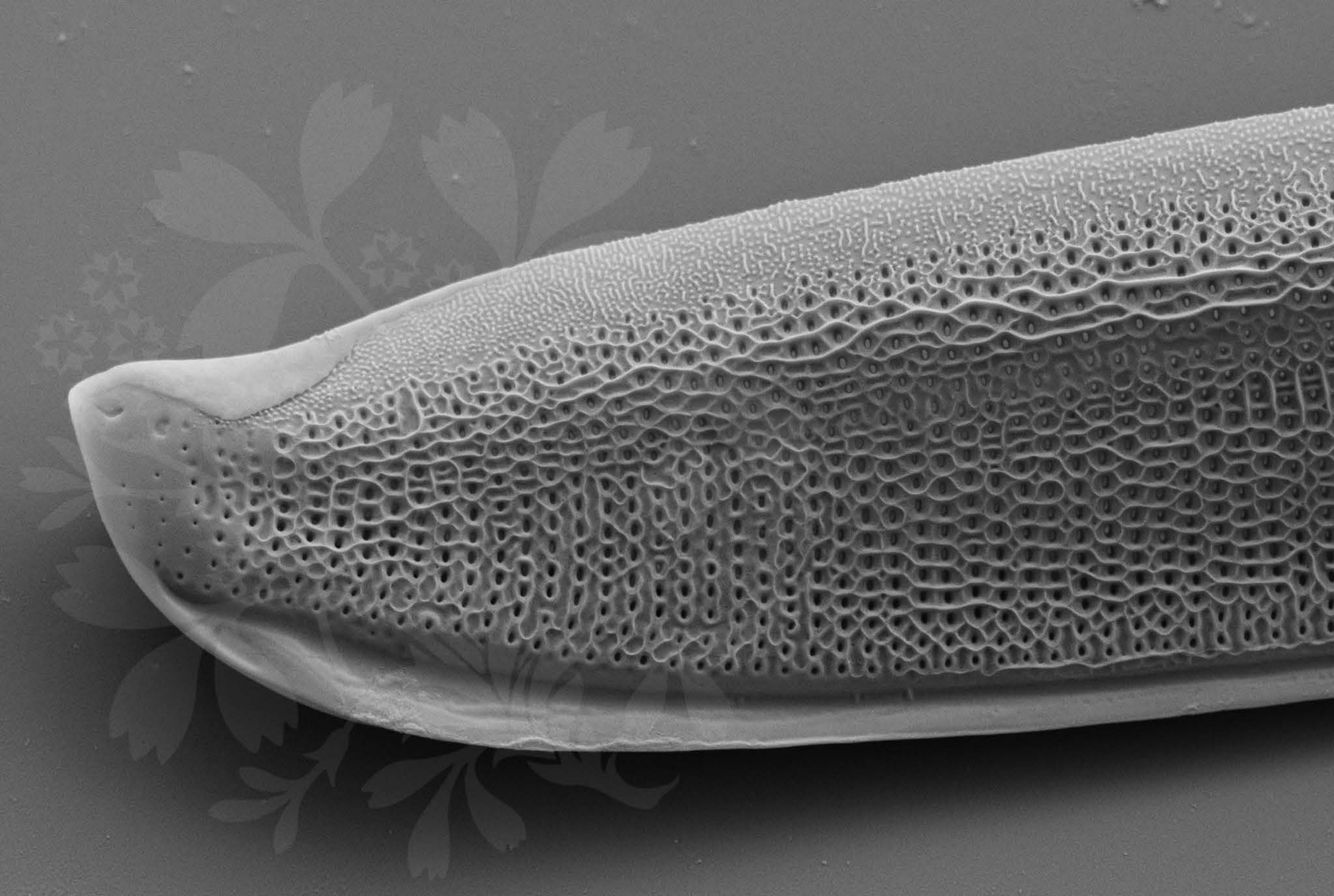
EHT = 4.50 kV

Signal A = SE2 Date :20 Feb 2017

WD = 4.3 mm

File Name = BC0897_1013.tif





1 μm
|-----|

Mag = 16.00 K X

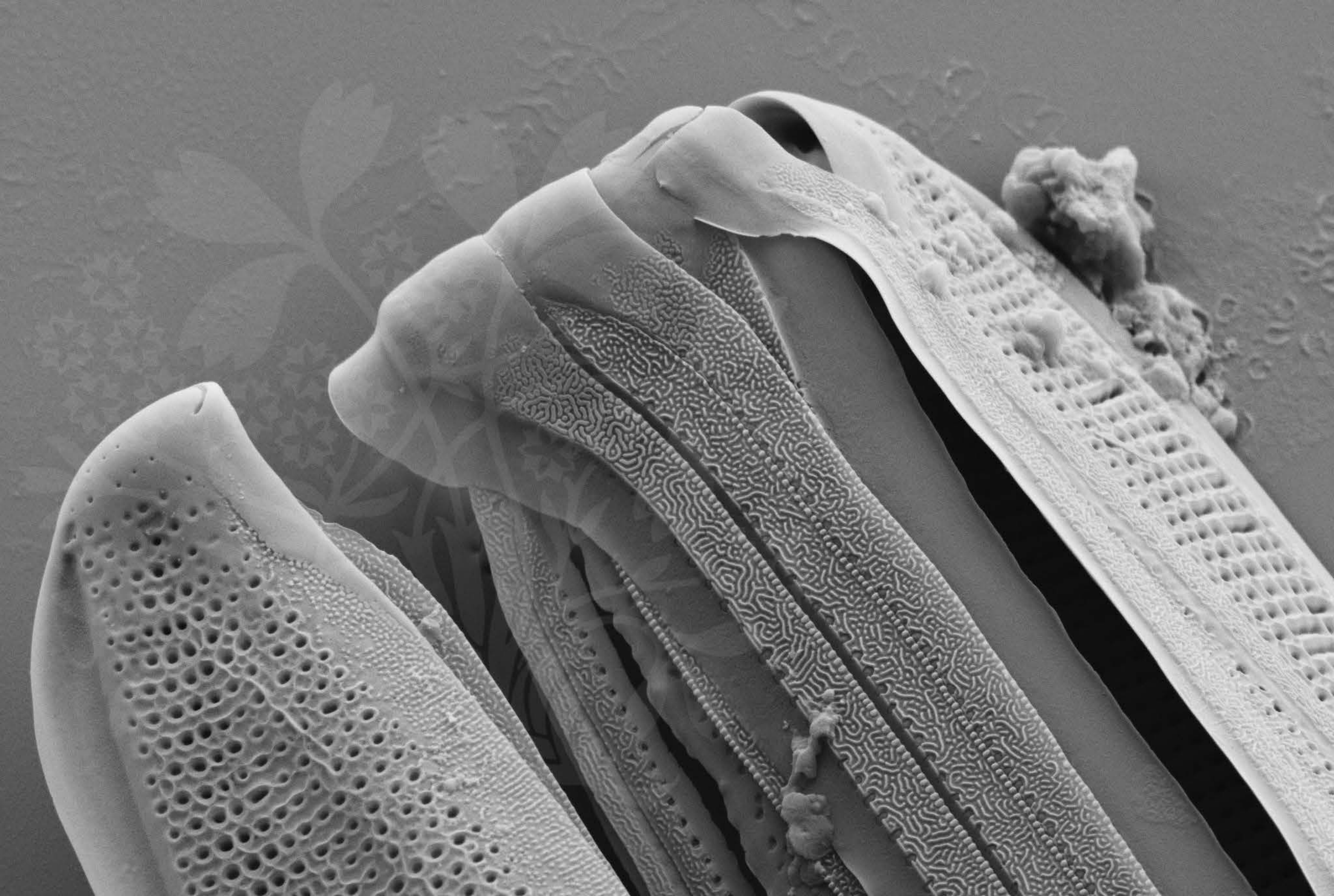
EHT = 4.50 kV

Signal A = SE2 Date :20 Feb 2017

WD = 4.3 mm

File Name = BC0897_1114.tif





1 μm
|-----|

Mag = 16.00 K X

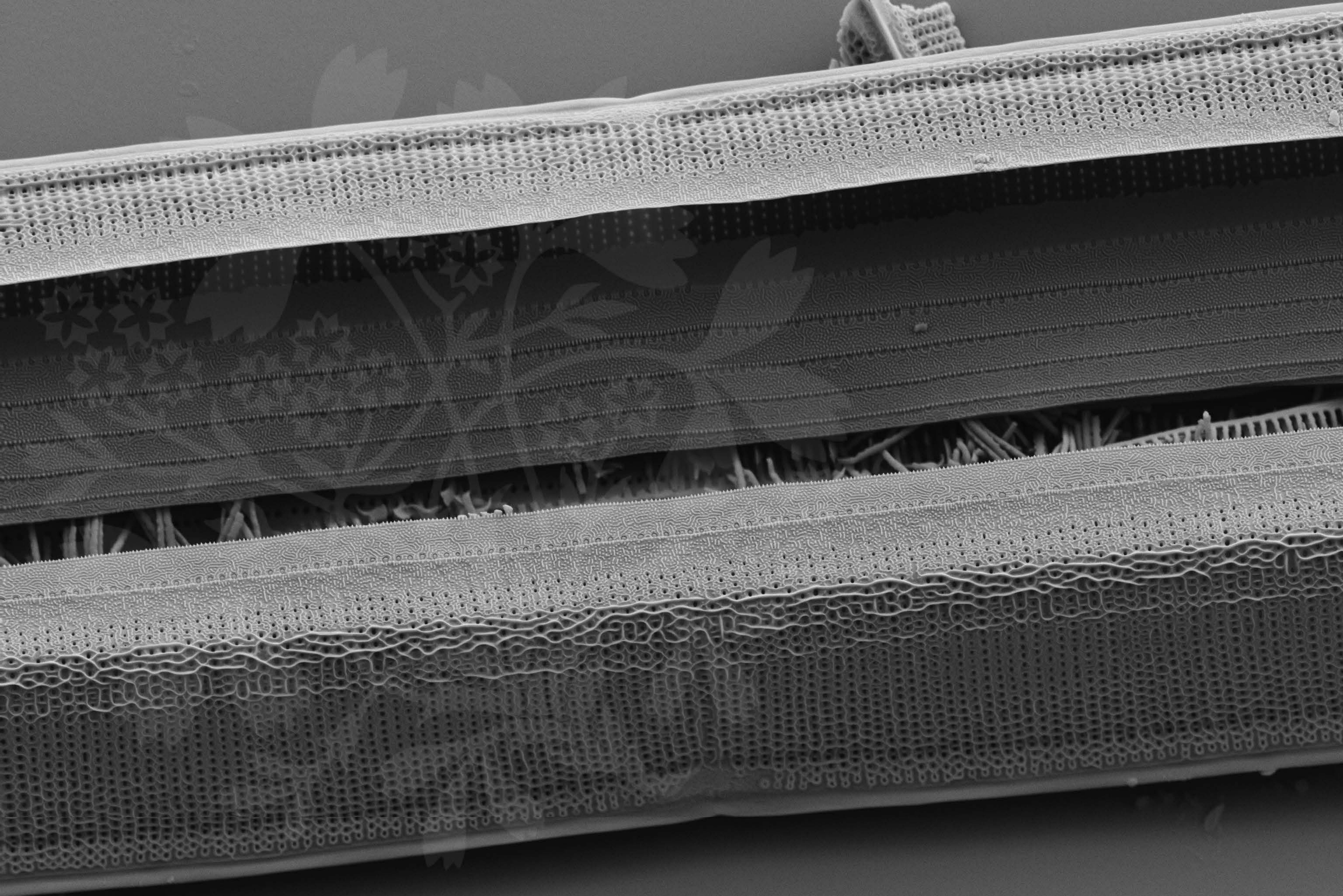
EHT = 4.50 kV

Signal A = SE2 Date :20 Feb 2017

WD = 4.3 mm

File Name = BC0897_1215.tif





1 μm
┌───┐

Mag = 7.50 K X

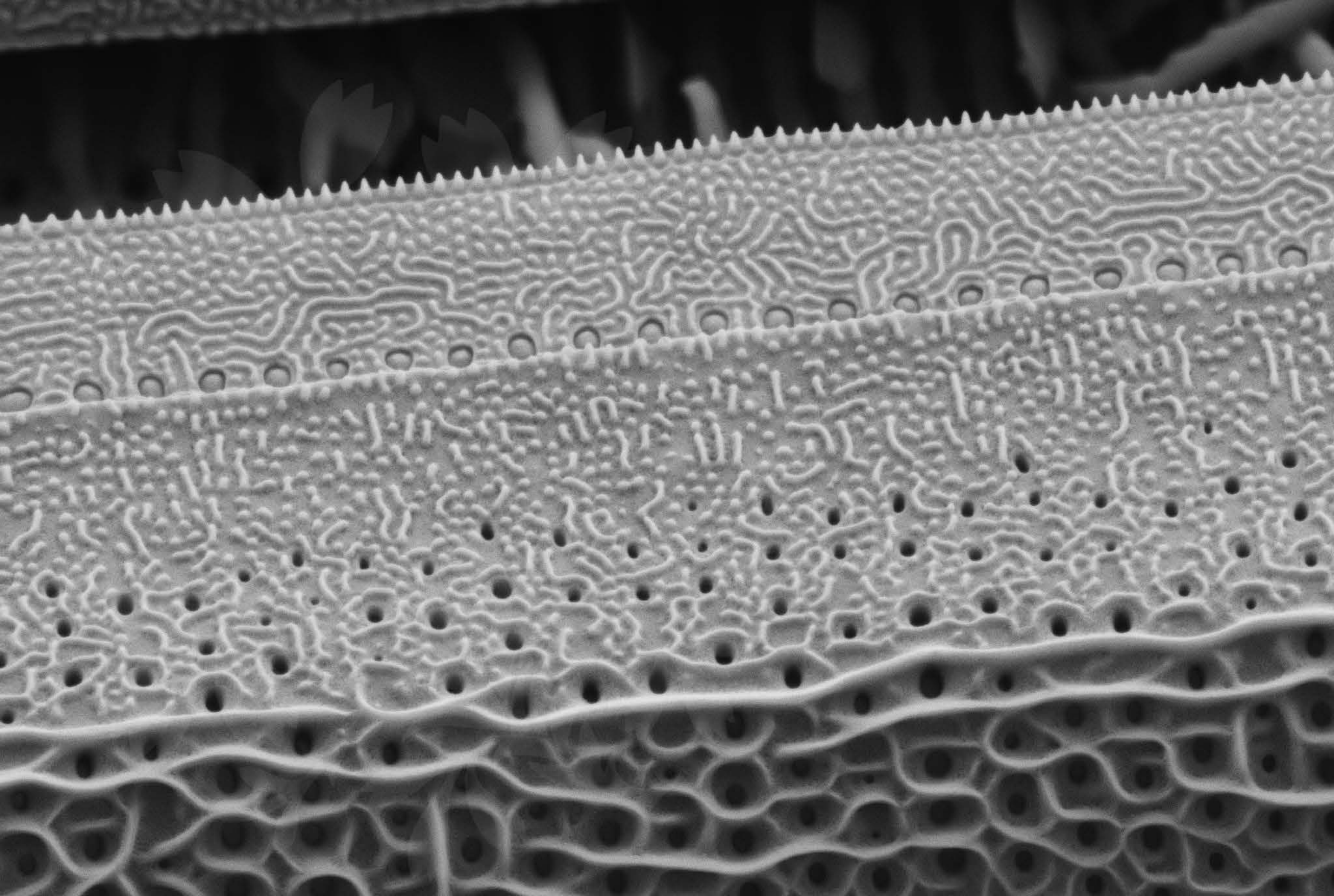
EHT = 4.50 kV

Signal A = SE2 Date :20 Feb 2017

WD = 4.3 mm

File Name = BC0897_1316.tif





200 nm



Mag = 40.00 K X

EHT = 4.50 kV

Signal A = SE2 Date :20 Feb 2017

WD = 4.3 mm

File Name = BC0897_1417.tif





1 μm
|-----|

Mag = 16.00 K X

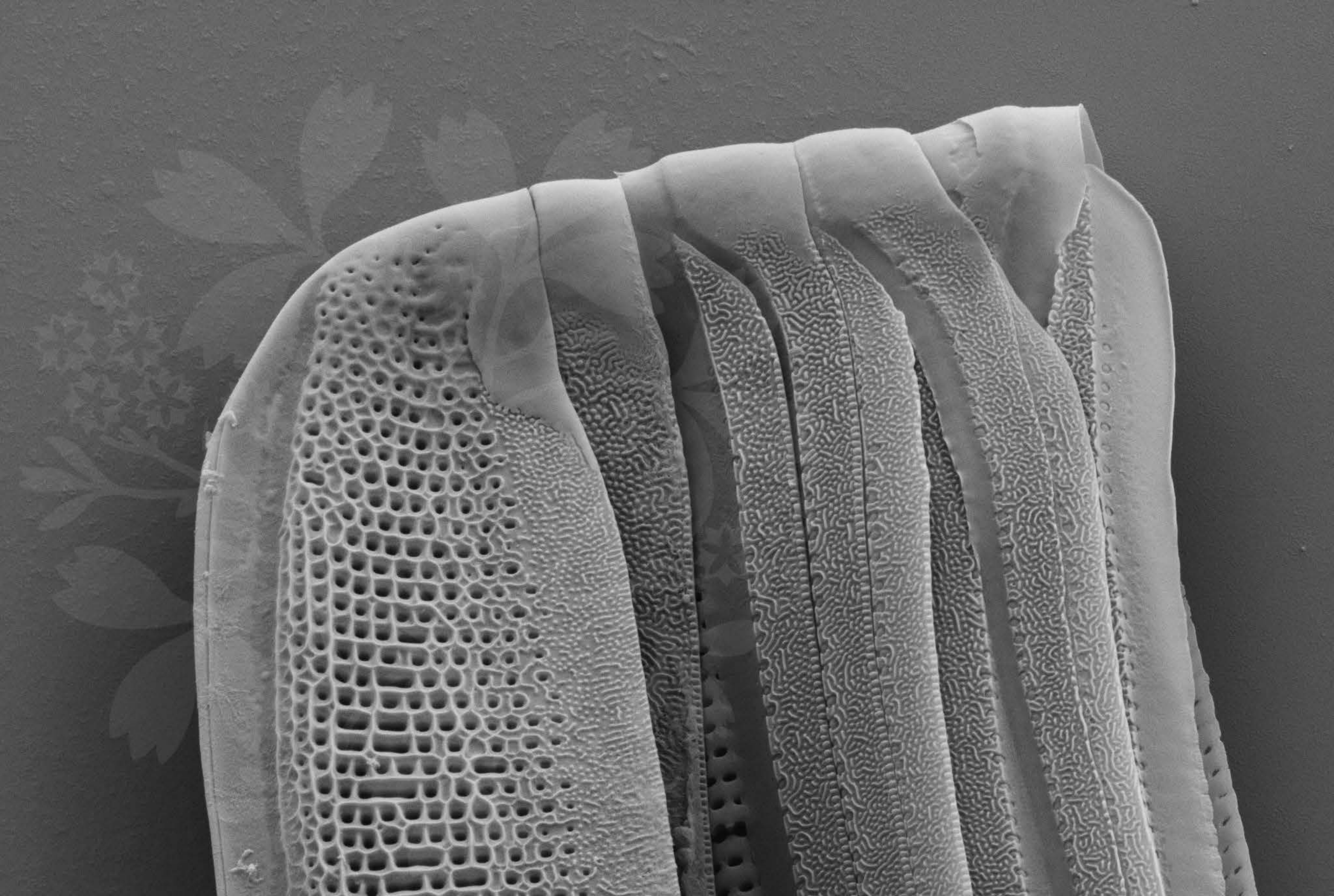
EHT = 4.50 kV

Signal A = SE2 Date :20 Feb 2017

WD = 4.3 mm

File Name = BC0897_15.tif





1 μm
|-----|

Mag = 16.00 K X

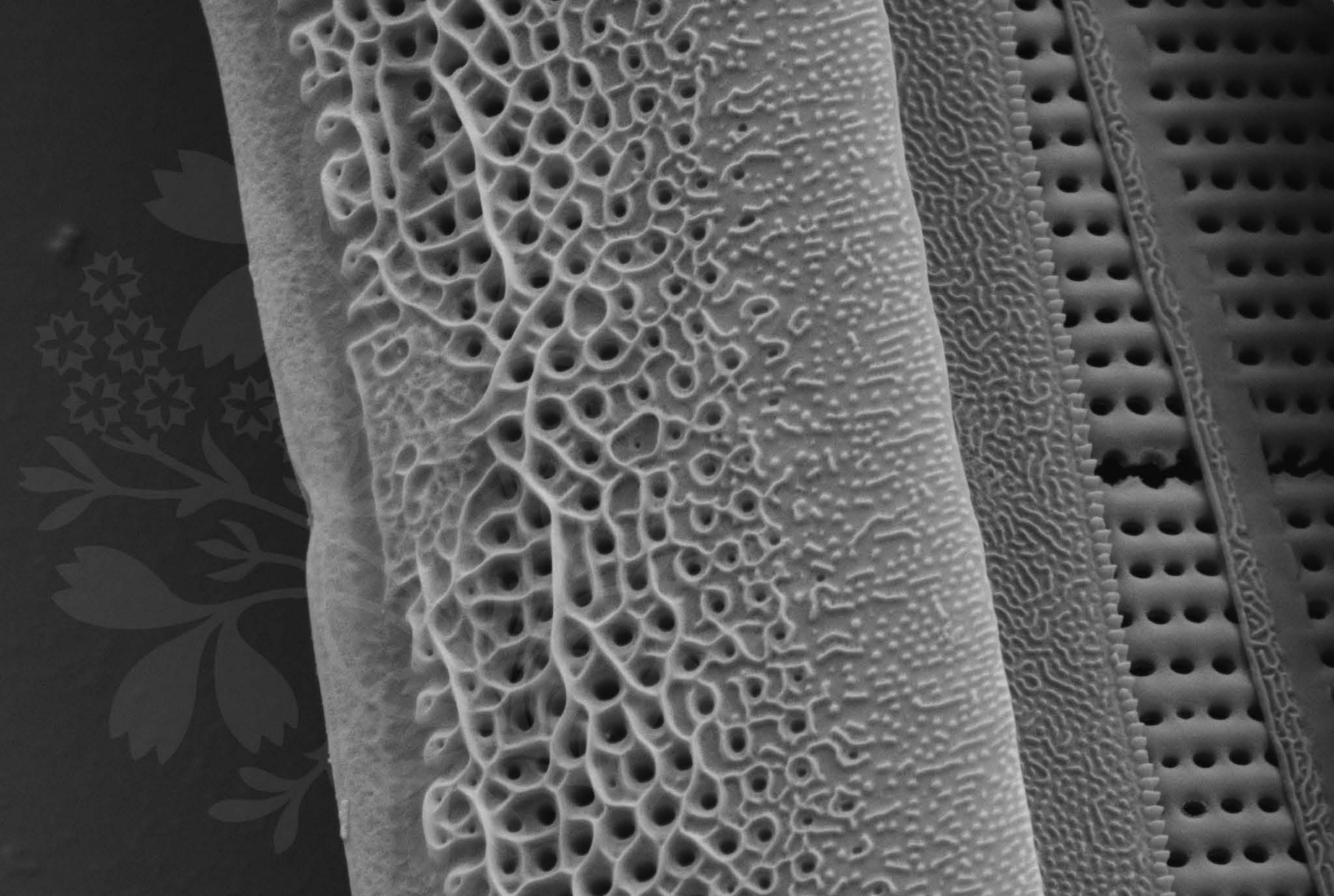
EHT = 4.50 kV

Signal A = SE2 Date :20 Feb 2017

WD = 4.3 mm

File Name = BC0897_16.tif





200 nm



Mag = 30.00 K X

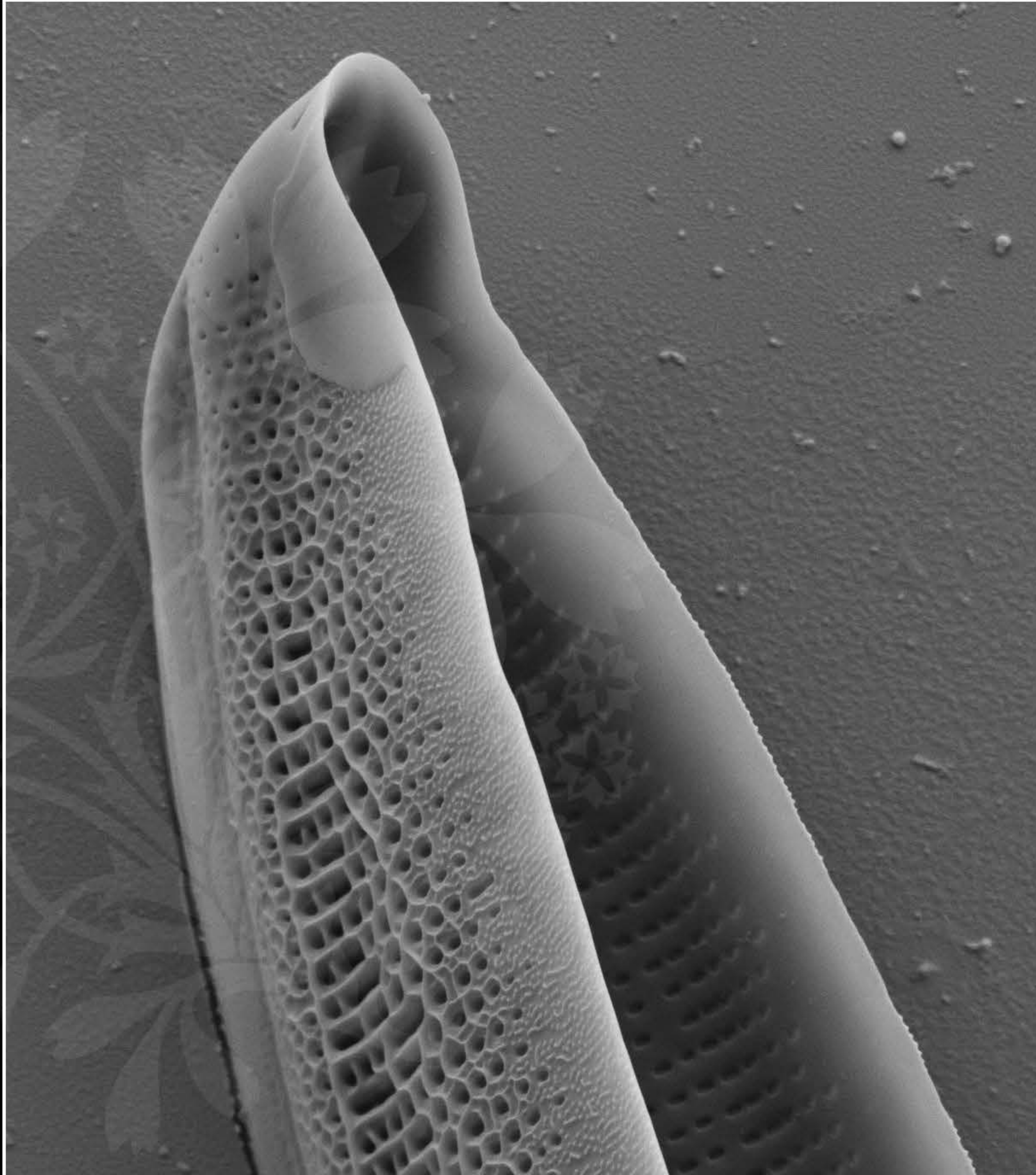
EHT = 4.50 kV

Signal A = SE2 Date :20 Feb 2017

WD = 4.3 mm

File Name = BC0897_17.tif





1 μm
|-----|

Mag = 16.00 K X

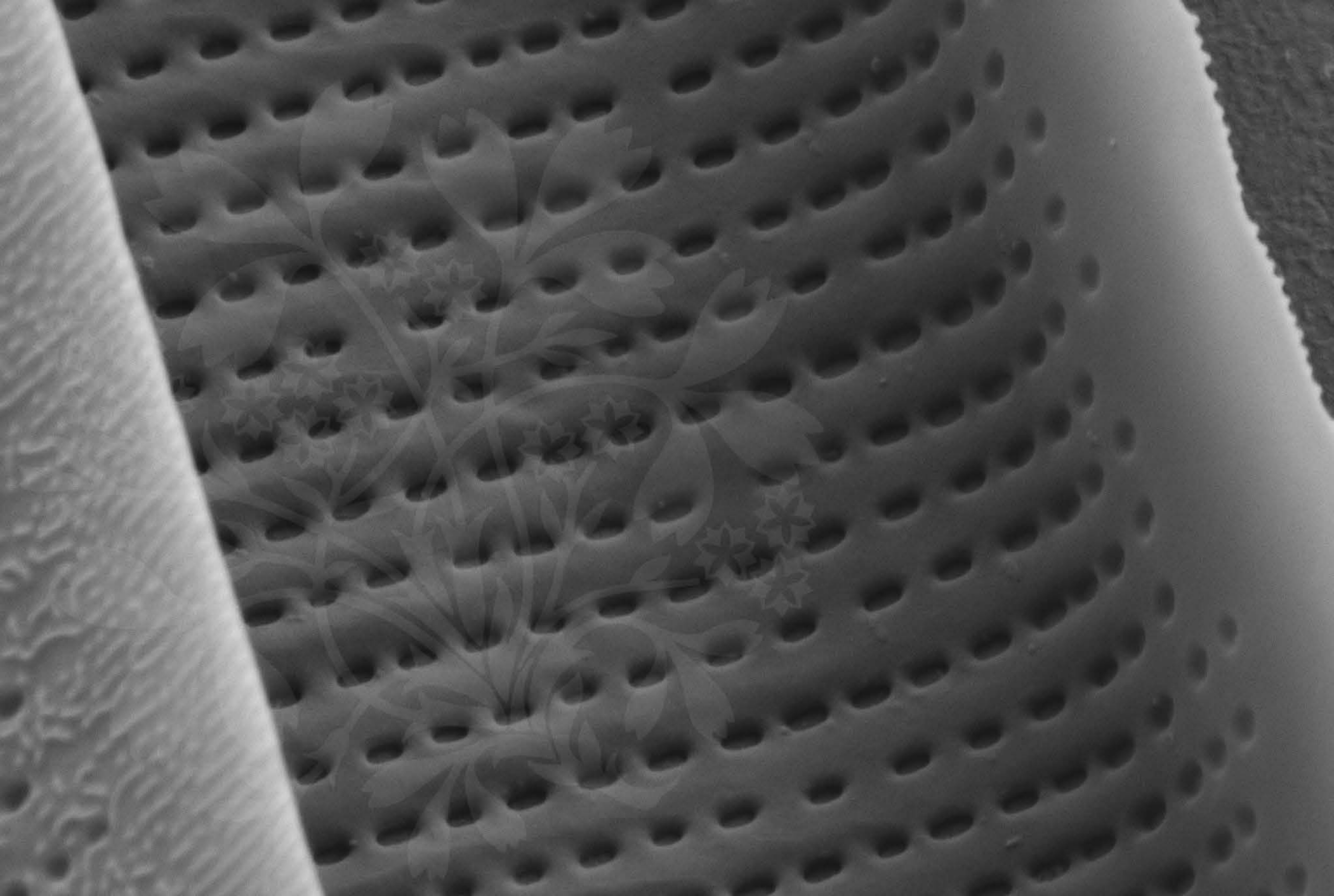
EHT = 4.50 kV

Signal A = SE2 Date :20 Feb 2017

WD = 4.3 mm

File Name = BC0897_18.tif





100 nm



Mag = 50.00 K X

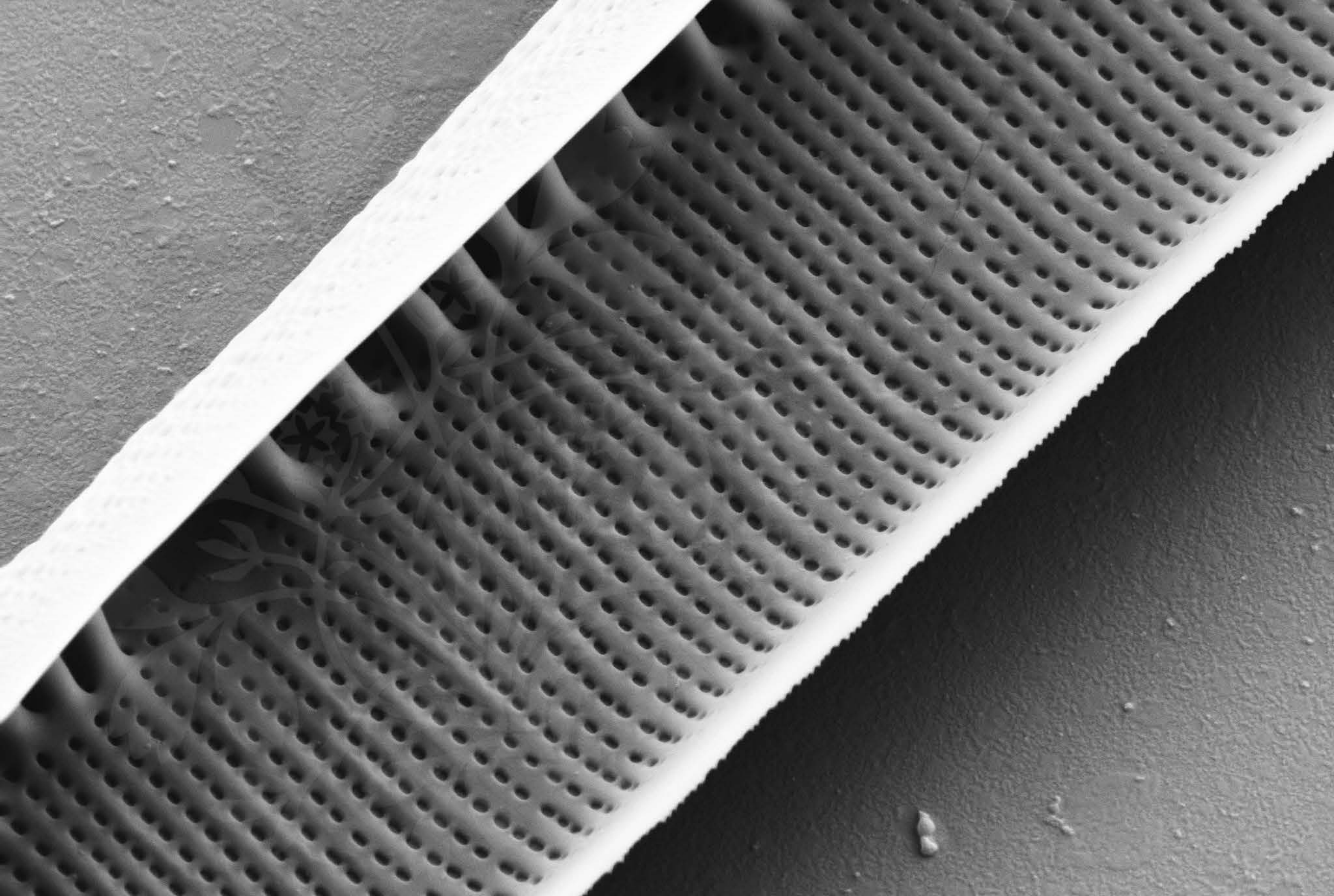
EHT = 4.50 kV

Signal A = SE2 Date :20 Feb 2017

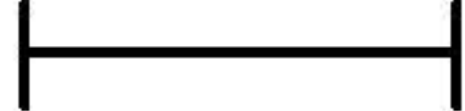
WD = 4.3 mm

File Name = BC0897_19.tif





1 μm



Mag = 20.00 K X

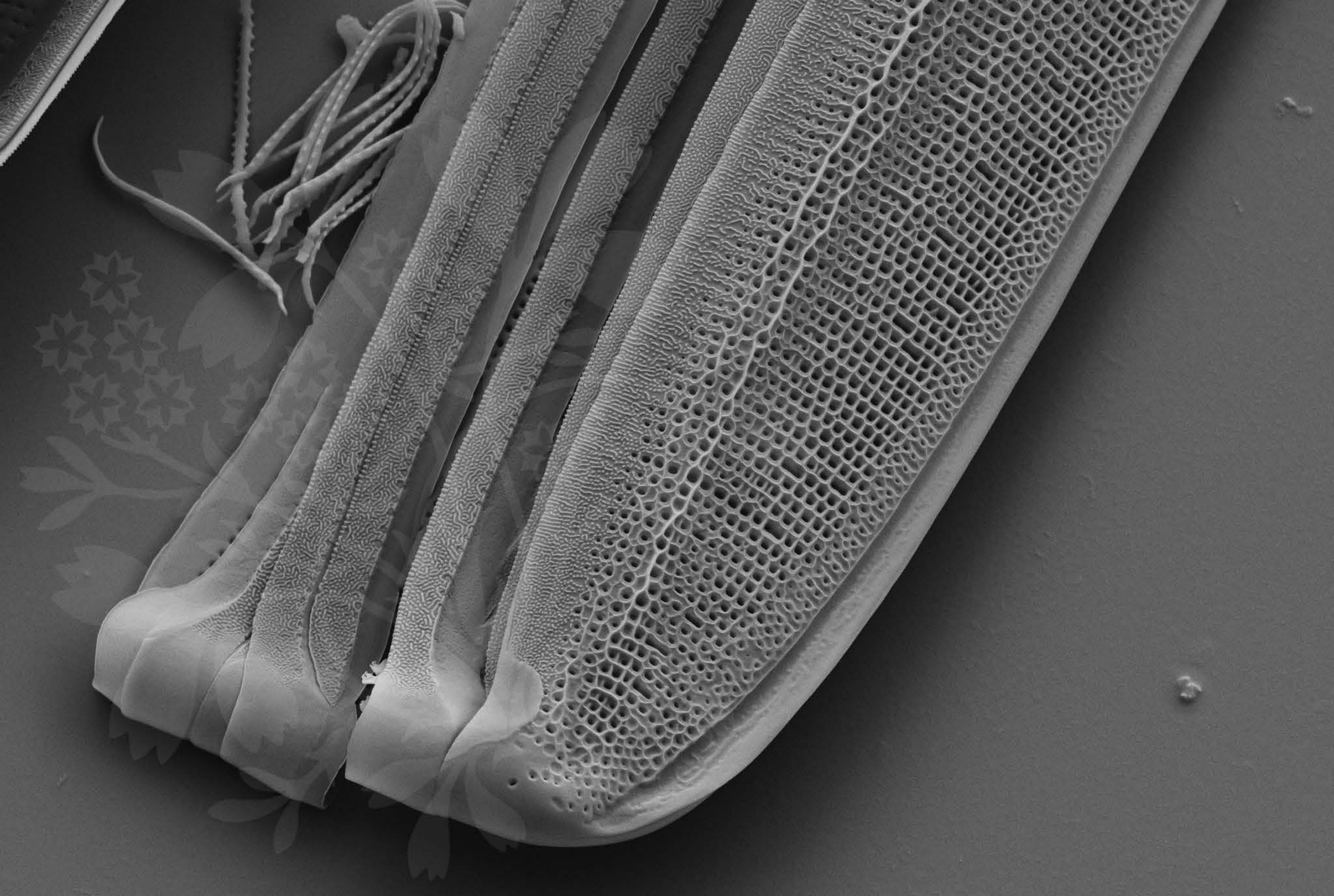
EHT = 5.00 kV

Signal A = SE2 Date :20 Feb 2017

WD = 4.3 mm

File Name = BC0897_20.tif





1 μ m
┌───┐

Mag = 10.00 K X

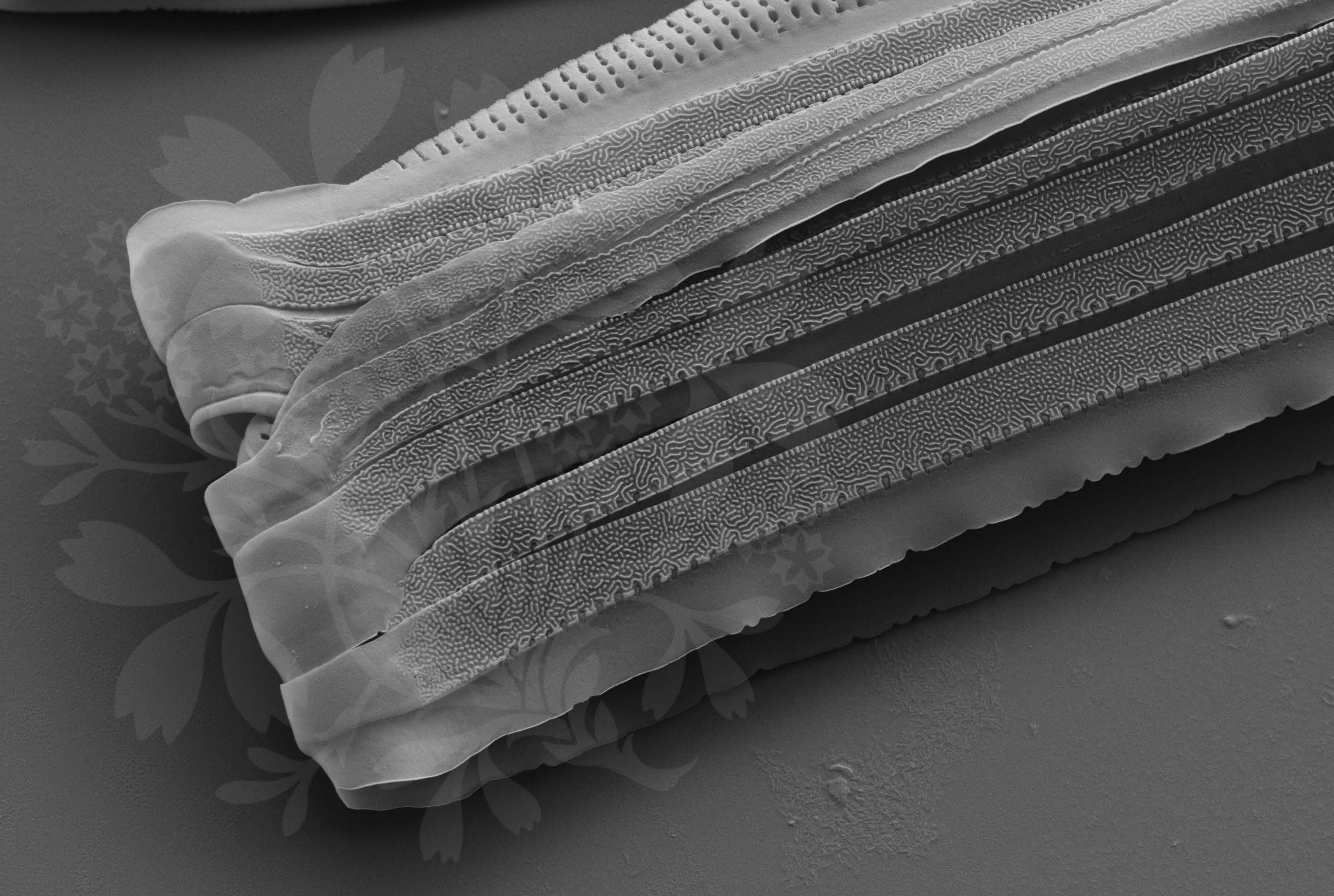
EHT = 5.00 kV

Signal A = SE2 Date :20 Feb 2017

WD = 4.3 mm

File Name = BC0897_21.tif





1 μm
|-----|

Mag = 12.61 K X

EHT = 5.00 kV

Signal A = SE2 Date :20 Feb 2017

WD = 4.3 mm

File Name = BC0897_22.tif

